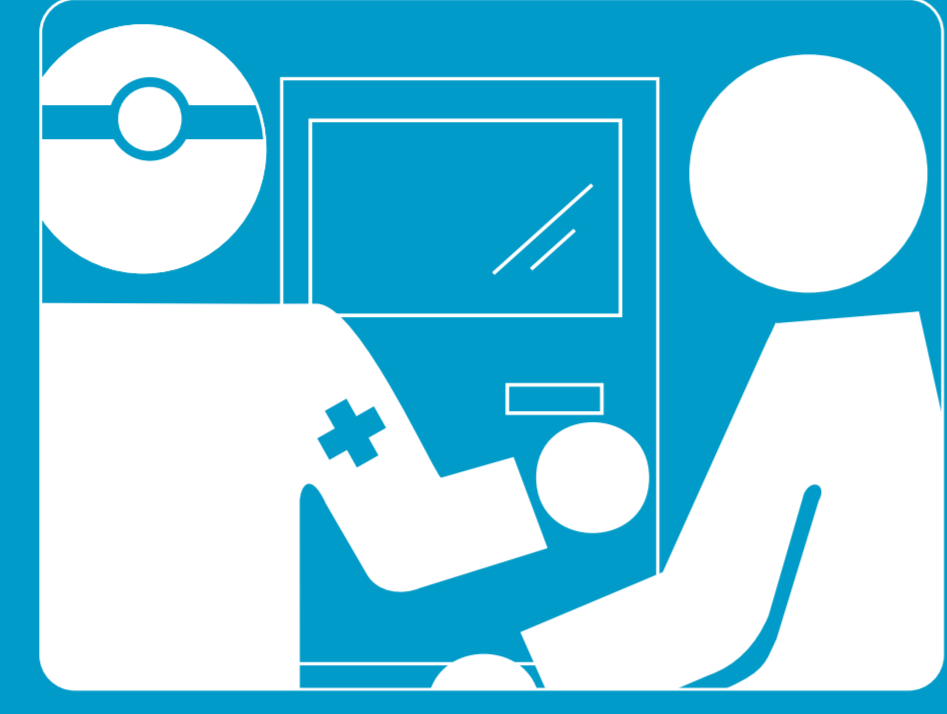


Ramtunge chem tami ngenkonkülen

Kom küme tami kimal chumechi mi tremoleam.



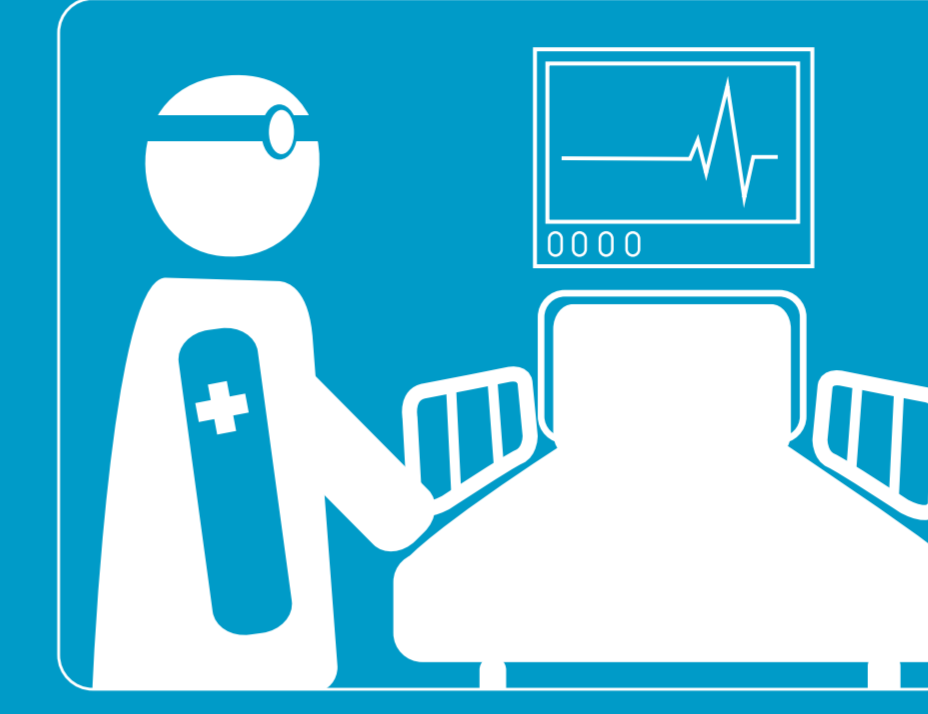
Küme llowngeal, yamniengeal tami kizu felenmu



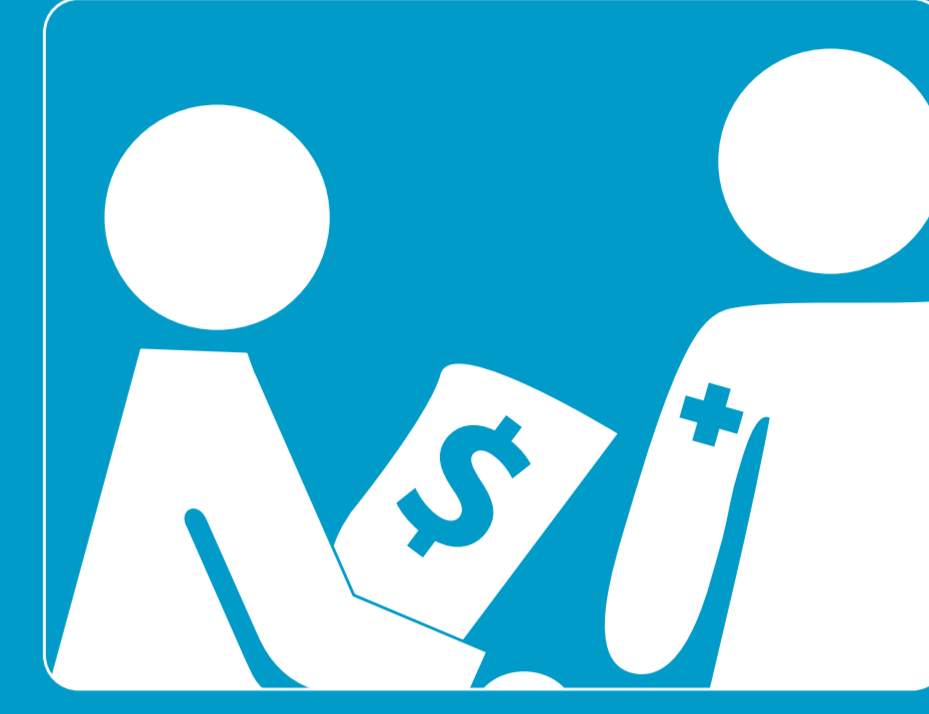
Felimi ngütrümgel tami ümwew ka mi küme azkintungeal.



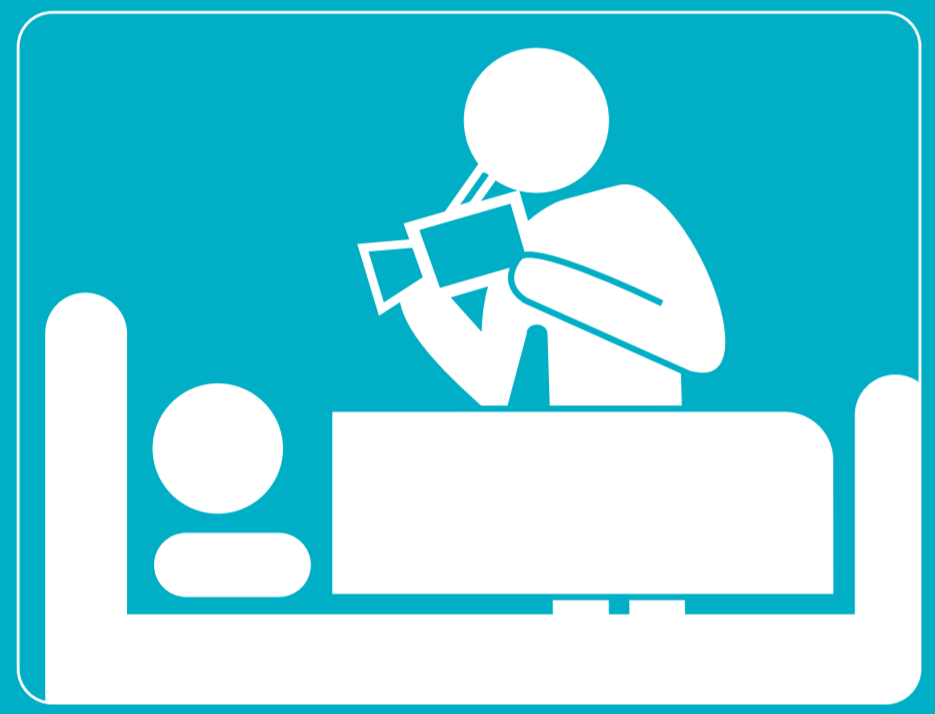
Llowal küme nor lawentuwün, ka küme tami eluzungu niengeal.



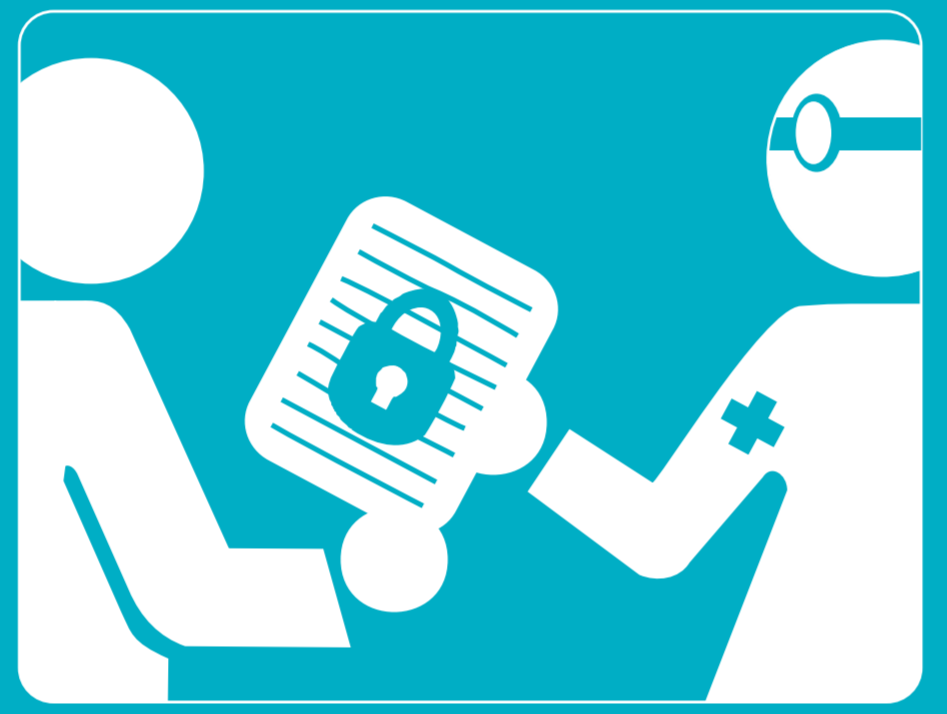
Felimi feypingal tunte chipan tañi lawentungenmum.



Entu azngenoal no pial kañi komchelngenoal eyimi pinolmi.



Tami wirrikonkülemem tami zungu pekan elungenoal kakelu che.



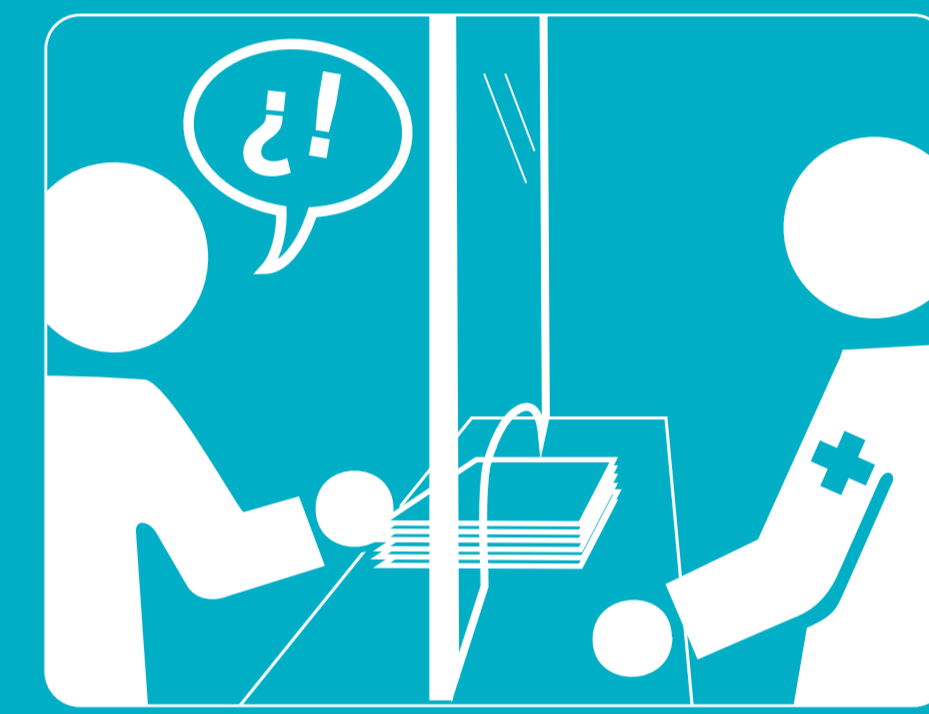
Pekanka mekengenoal lawentuwe mew ka zualme alta kizu ngünewal.



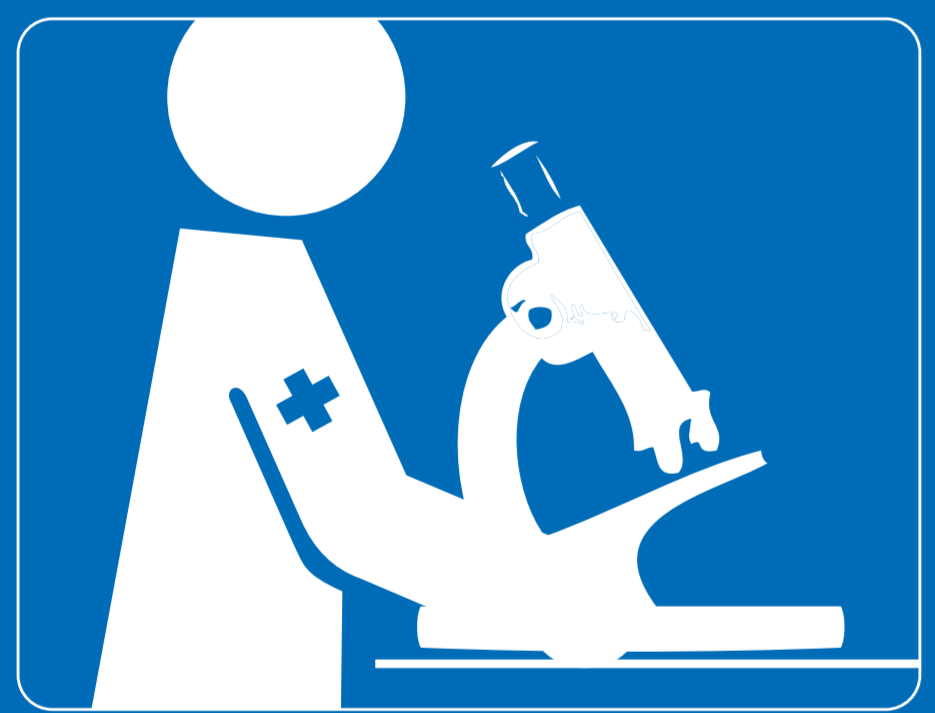
Llowal witran, kompañ ka kelluchepelu



Feli tañi ramtual chumechi tañi lawentungen ta che.



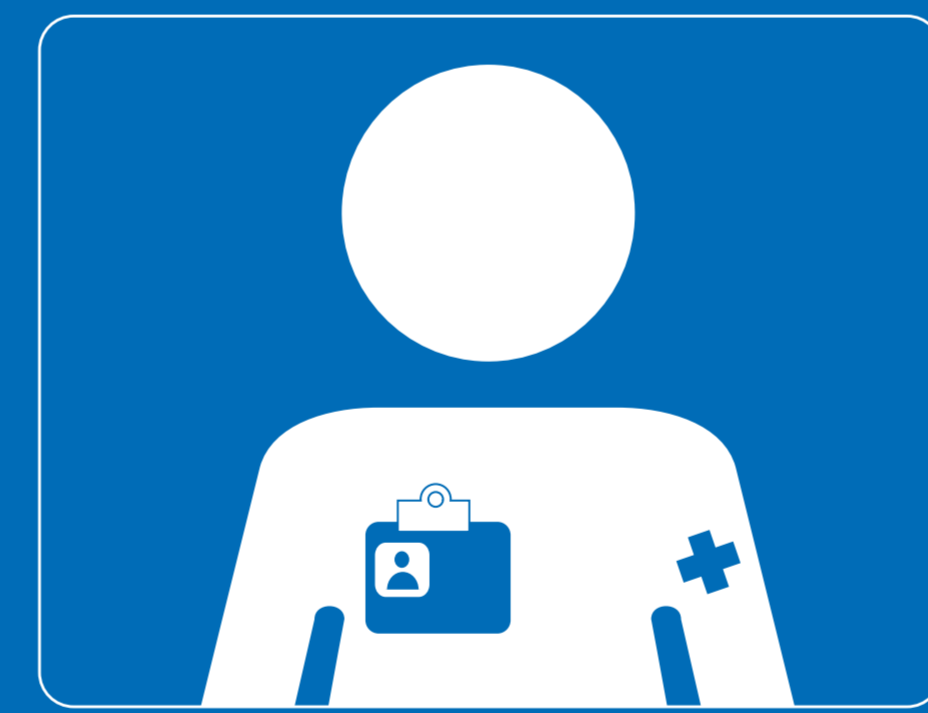
Tukungelmi eyimi chillkatungeafuy tami kutran pinolmikay femlayay.



Chew zuaniengele, feli ñi müleal mapudungun mew wirrikonküleal o feli ñi müleal amuldungufe kim mapuzungulu.



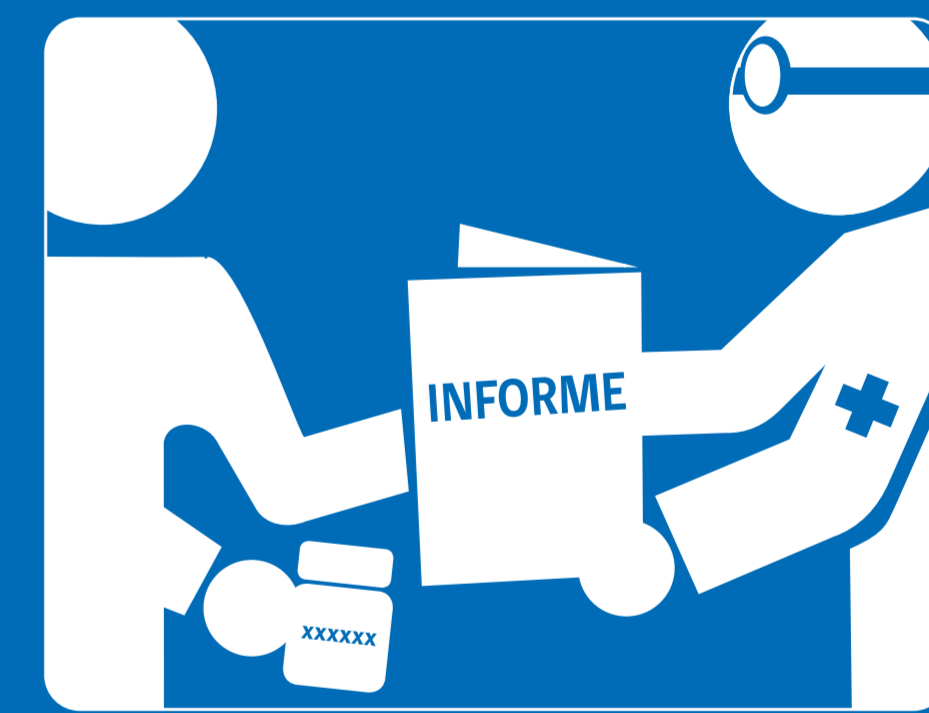
Feyti pu küzaufe pe kutrankelu feli ñi aznial tañi iñi pingen.



Wirrintukungeal we choyülu we pichiche chew tañi mülemum.



Feyti lawentuchefe feli ñi küme wül zungual chumngelu tañi pitalizan ta che.



Fely tami feyentual

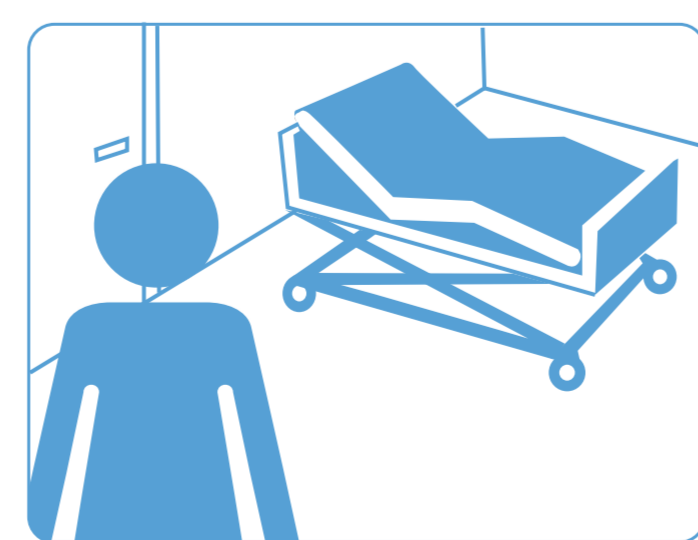
Küme wül zunguaymi chumechi tami kutranün, tami üñi pingen ka chew tüwün.



Kimafimi ka yamafimi feyti chumechi zungu ñi mülen ponwi feyti lawentuwe ruka.



Felimi upetuafiel fillem mülkelu lawentuwe ruka mew.



Feli tami kimal chen hora lawentungeken ta che ka chumechi kulliken.



Yamafimi tati pu tremolchefe mülelu.



Feli tami kimal chew tami zunguntuwal.

